



Black Country
Transport

Building the Business Case for EV Infrastructure Funding

Kester Sleeman – ULEV Programme Manager

in partnership with



Walsall Council

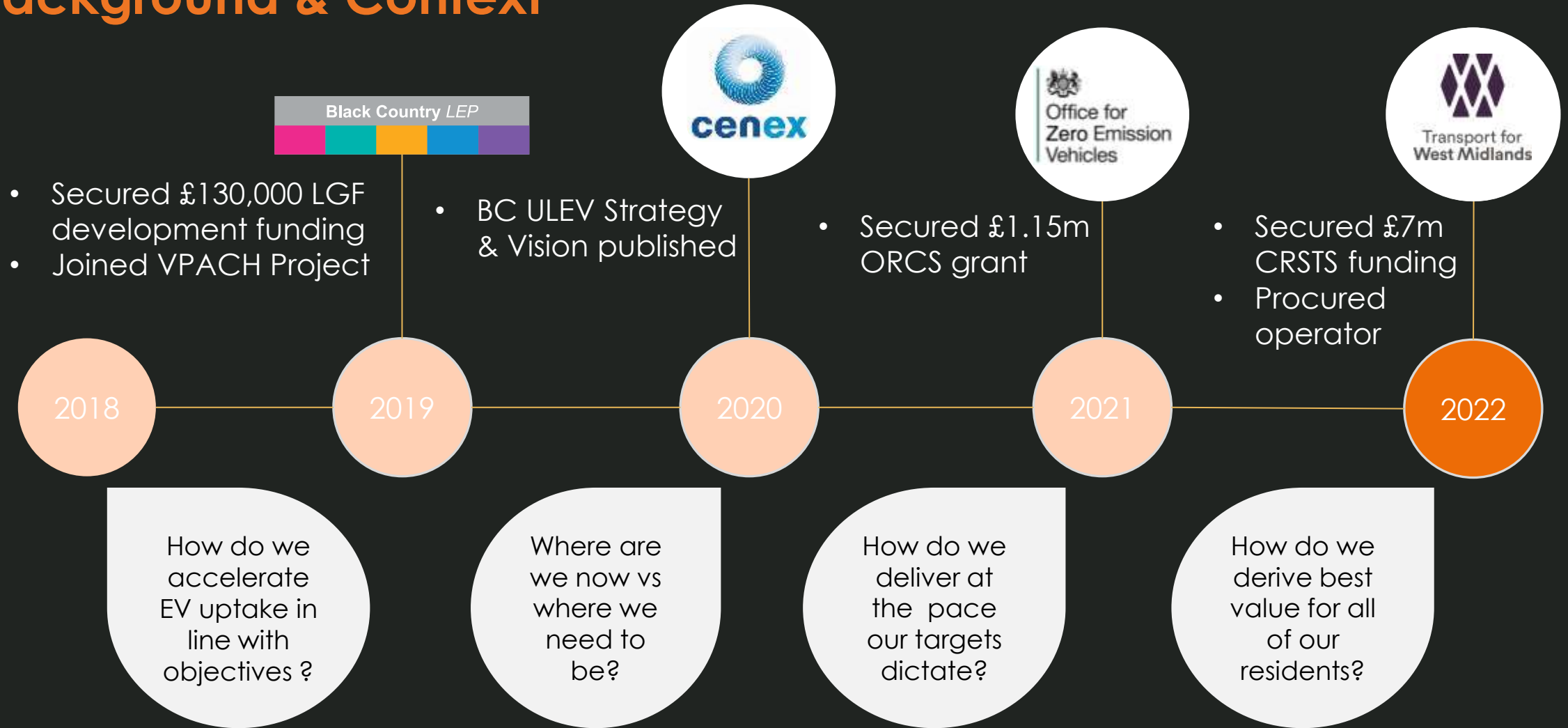
CITY OF
WOLVERHAMPTON
COUNCIL

The Black Country

- Four local authorities west of Birmingham
- 1 million+ residents
- Mixed picture politically
- Strong PT offer, but highly polycentric nature results in reliance on private vehicles
- ~30% of households without off street parking
- Real lack of public charging infrastructure
- Black Country Transport set up to support collaborative working on strategic transport



Background & Context



Black Country Ultra-Low Emission Vehicle Vision

The **Black Country** will lead the West Midlands on the road to **net-zero** by accelerating and amplifying the **EV transition** in anticipation of a **2030 ban** on the sale of conventional vehicles.

Current Emissions (tonnes)

CO₂ 1.54 million
NO_x 3.02 thousand
PM 96.55



2020

Launch Public Engagement Programme

- Consult on Proposal & Adopt Policy
- Full Business Case Development
- Initiate Regional Co-ordination

Begin Infrastructure Rollout

2021

Resource the ULEV Programme

- Deploy Measures to Reduce Vehicle Parc

CO₂ -4%
NO_x -13%
PM -37%



- Equip Council Sites with Chargepoints

Refresh the ULEV Vision and Strategy

2024

- Refresh Planning Policy
- Taxi Licencing Review

2023

- Install First Rapid & Ultra-Rapid Charging Hubs
- Begin Council Fleet Electrification
- Publish Public Transport Decarbonisation Plan

2022

£5.7m investment

Chargepoints installed:

- 761 Standard
- 214 Fast
- 19 Rapid

2025



2028

Wolverhampton Council Net-Zero target



£23.6m investment

Chargepoints installed:

- 3200 Standard
- 630 Fast
- 196 Rapid

2030



Walsall Council Net-Zero target



CO₂ -23%
NO_x -40%
PM -62%

Benefits

£72m

Total Annual Savings from Emissions reduction

>90% of Black Country under 5 minute drive from a Rapid chargepoint

>95% of Black Country less than 500m from a public charging point

2025 OBJECTIVES

OVER 95%

of urban areas
WITHIN 500M
of a Public Chargepoint

>90%

of Black Country land area
UNDER 5 MIN DRIVE
from a Rapid or
Ultra-Rapid Chargepoint

ADDITIONAL CHARGEPOINTS INSTALLED:

761 **214** **19**
STANDARD FAST RAPID

£5.7M

INVESTMENT REQUIRED
for delivery of infrastructure

EMISSION REDUCTIONS:

-4% **-13%** **-37%**
CO₂ NO_x PM

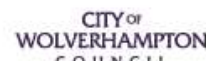
£21M

TOTAL ANNUAL SAVING
from emission reductions

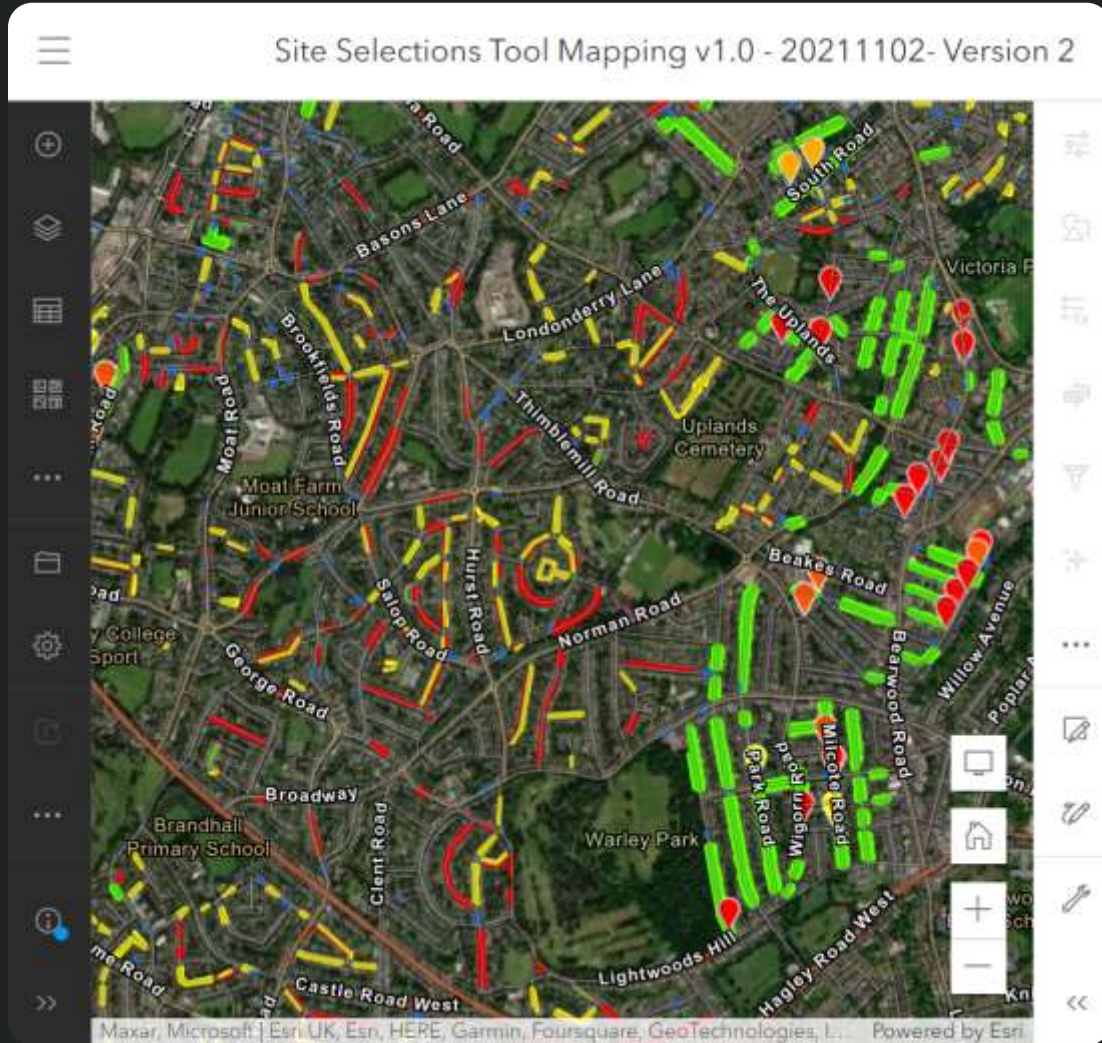
7.5% EV SHARE



In partnership with:



Infrastructure - Spatial Planning



- We have developed a tool to assist in identifying suitable locations for on-street charge points, which includes:
 - TROs
 - Junctions
 - Footway and road width
- Currently working on case for a regional procurement approach and looking at different delivery options for different use cases

Policy Recommendations



Modal Shift

- Deploy Measures to reduce Vehicle Parc by **2021**



Council Fleets

- Devise in depth vehicle replacement Strategy
- All new (appropriate) cars and vans EV after **2022**



Public Transport

- Include ULEVs as a weighted tendering measure for new transport contracts
- Publish Public Transport decarbonisation plan by **2022**



Taxi Licensing

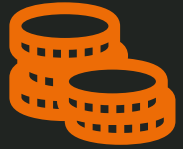
- Encourage Licensing reviews across all LA's and adopt collective approach
- New Licenses to be EV after **2028**



Planning Policy

- Update existing or creating new SPD for developers by **2023**

Resourcing



£5.7M

For infrastructure (Includes DNO Costs)



1 FTE

ULEV
Programme
Manager

To coordinate BC programme delivery



Rounded ask for infrastructure, connections and resourcing

- Funding Streams
- BEIS
 - OZEV
 - WMCA
 - BC LEP
 - DfT
- 

Consultation, Engagement and Equity



- Consulted on strategy, and more recently consulted on specific ORCS sites
- Huge swing in public opinion in last two years
- Members and officers focused on equity of delivery over short-term revenue
- Very few areas of considerable latent demand
- Uncomfortable directing significant public money to already affluent areas
- Working with ALMO to provide chargers for social housing fleet and residents
- Investigating car club as means of providing affordable EV access in short term



Black Country
Transport

Thank you for listening

in partnership with



Walsall Council

CITY OF
WOLVERHAMPTON
COUNCIL